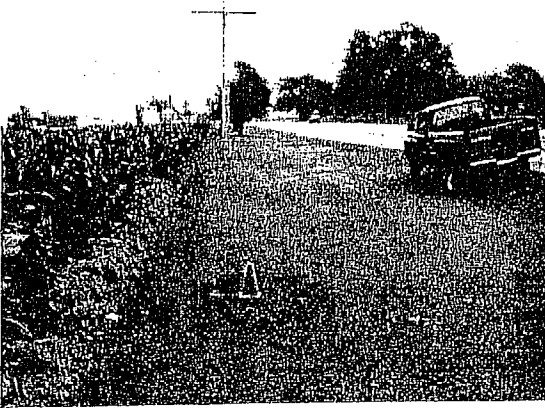


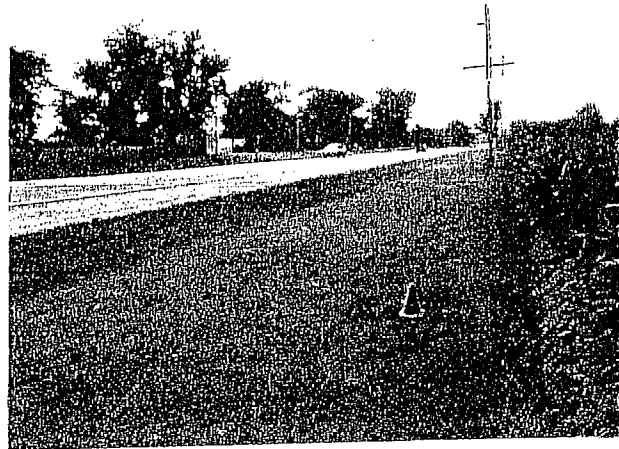
# Monument Number 1

Survey Point	Northing	Easting	Elevation (US feet)
ROCK FALLS 01	1859921.67	2414069.39	636.24

*527.999 EHT.*



Looking east along Rt. 30



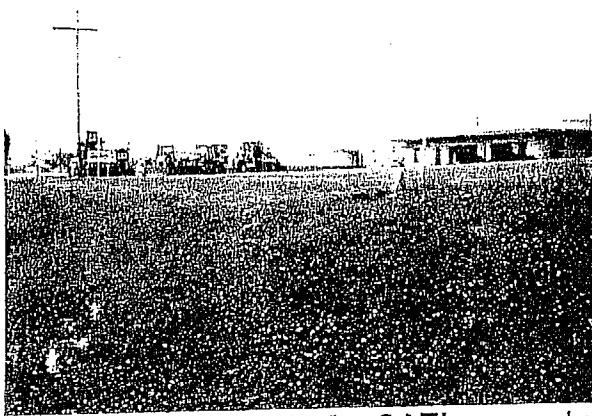
Looking West along Rt. 30

Location: Along the North side of Rt. 30 on the ROW line between 3920 W. Rock Falls Rd. (Rt.30, The underground House) and Rock River Provision. 837.8' W. of the intersection of Rt. 30 and Riverdale Rd. and 36.2' N of the W bound lane pavement.

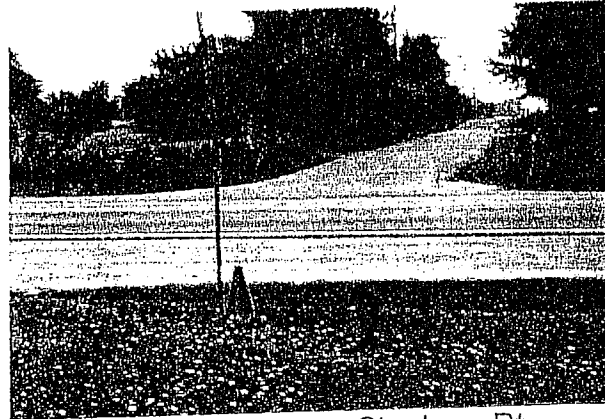
Description: Monument is a brass head incased in a 6" dia. PVC pipe that is filled with concrete, and for locating it has a piece of rebar inside of it. Monument also has an aluminum flip top on it, that is approximately 1-2" below the surface.

## Monument Number 02

Survey Point	Northing	Easting	Elevation (US feet)
ROCK FALLS 02	1859951.34	2417530.75	639.61



Looking NW onto Altofer CAT's property  
30



Looking S. down Lenore St. along Rt.

**Location:** On the North side of Rt. 30 along the ROW line of the intersection of Rt. 30 and Lenore St., on the South property line of Altofer CAT. 35.2' N. of the W. bound lane pavement and 12.1' W. of the center line of the intersection of W. Rt.30 and Lenore St. in the SE corner of Altofer CAT property.

**Description:** Monument is a brass head incased in a 6" dia. PVC pipe that is filled with concrete, and for locating it has a piece of rebar inside of it. Monument also has an aluminum flip top on it, that is approximately 1-2" below the surface.

## Monument Number 03

Survey Point	Northing	Easting	Elevation (US feet)
ROCK FALLS 03	1857234.75	2416754.16	635.90



Looking West from house 1801 Theresa St. Looking East at house 1801 Theresa St

Location: On the SW corner of house 1801 Theresa St. the cross street is Dawn St. 65.4' SW of the SW corner of house 1801 Theresa St. and 440.6' SE of the center line intersection of Dawn St. and Theresa St.

Description: Monument is a brass head incased in a 6" dia. PVC pipe that is filled with concrete, and for locating it has a piece of rebar inside of it. Monument also has an aluminum flip top on it, that is approximately 1-2" below the surface.

## Monument Number 04

Survey Point	Northing	Easting	Elevation (US feet)
ROCK FALLS 04	1862229.27	2421515.29	637.88



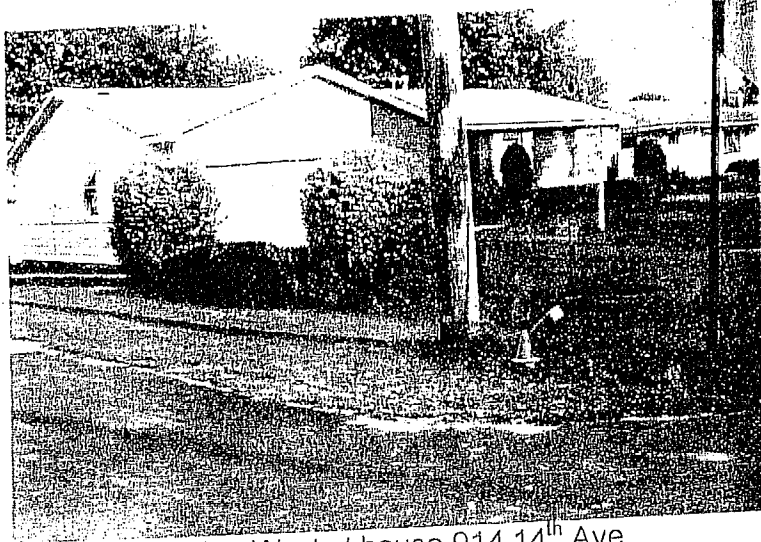
Looking NE of the intersection of W 2<sup>nd</sup> St. and 14<sup>th</sup> Ave.

Location: Intersection of W 2<sup>nd</sup> St. and 14<sup>th</sup> Ave. behind the curb on the NW side by the Hydrant. 34.5' n of the S curb line on 2<sup>nd</sup> St. and 11.5' W of the W curb line on 14<sup>th</sup> Ave.

Description: Monument is a brass head incased in a 6" dia. PVC pipe that is filled with concrete, and for locating it has a piece of rebar inside of it. Monument also has an aluminum flip top on it, that is approximately 1-2" below the surface.

## Monument Number 05

Survey Point	Northing	Easting	Elevation (US feet)
ROCK FALLS 05	1859937.82	2421504.82	638.73



Looking West at house 914 14<sup>th</sup> Ave.

**Location:** Intersection of W 10<sup>th</sup> St. and 14<sup>th</sup> Ave. on the SE side of the property line of house 914 14<sup>th</sup> Ave. 228.2' from the concrete approach going to the N on 14<sup>th</sup> Ave. from Rt. 30 and 35.2' E of the SE corner of house 914 14<sup>th</sup> Ave.

**Description:** Monument is a brass head incased in a 6" dia. PVC pipe that is filled with concrete, and for locating it has a piece of rebar inside of it. Monument also has an aluminum flip top on it, that is approximately 1-2" below the surface.

## Monument Number 06

Survey Point	Northing	Easting	Elevation (US feet)
ROCK FALLS 06	1857487.34	2421506.16	635.60



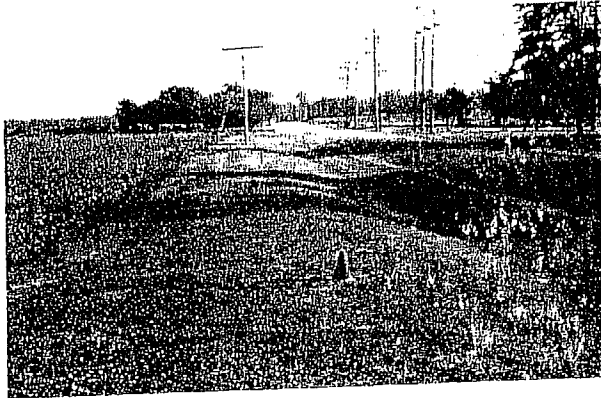
Looking West at house 1710 Buell Rd. (14<sup>th</sup> Ave.)

**Location:** On 14<sup>th</sup> Ave. between w 17<sup>th</sup> St. and 19<sup>th</sup> St. on the West side of 14<sup>th</sup> Ave. behind the curb line. 3' W of the S bound curb \*(BoC) on Buell Rd. (14<sup>th</sup> Ave.) and 50' North of the NE corner of house 1710 Buell Rd. (14<sup>th</sup> Ave.)

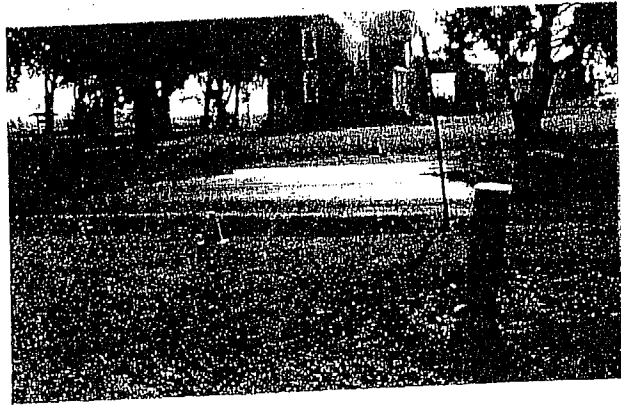
**Description:** Monument is a brass head incased in a 6" dia. PVC pipe that is filled with concrete, and for locating it has a piece of rebar inside of it. Monument also has an aluminum flip top on it, that is approximately 1-2" below the surface.

## Monument Number 07

Survey Point	Northing	Easting	Elevation (US feet)
ROCK FALLS 07	1854699.13	2421506.00	637.62



Looking North up Buell Rd.



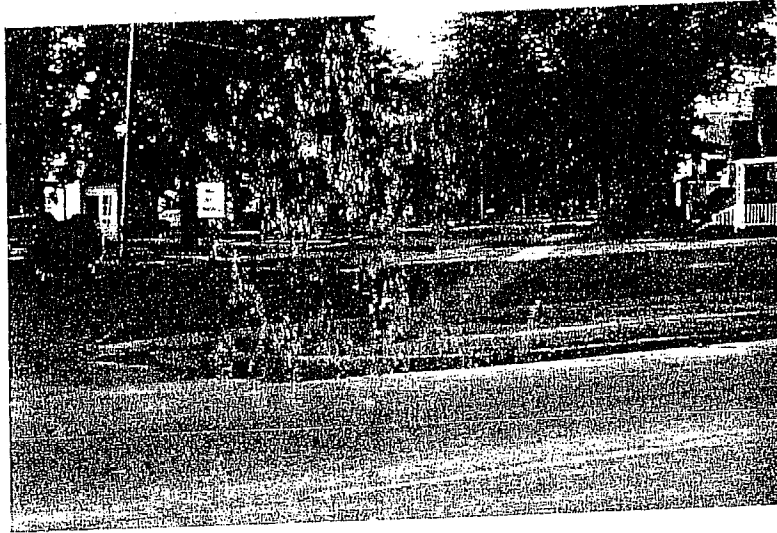
Looking East at house 2509 Buell Rd.

Location: On Buell Rd. (14<sup>th</sup> Ave.) W side of the road across from house 2509 Buell Rd., next to a phone pedestal. 649' S of the last post of the S bound guard rail on Buell rd. and 124' W of the SW corner of house 2509 Buell Rd.

Description: Monument is a brass head incased in a 6" dia. PVC pipe that is filled with concrete, and for locating it has a piece of rebar inside of it. Monument also has an aluminum flip top on it, that is approximately 1-2" below the surface.

## Monument Number 08

Survey Point	Northing	Easting	Elevation (US feet)
ROCK FALLS 08	1862331.77	2424473.53	638.72



Looking South down 7<sup>th</sup> Ave.

Location: In the intersection of W 2<sup>nd</sup> St. and 7<sup>th</sup> Ave. on the SW corner of W 2<sup>nd</sup> St. and 7<sup>th</sup> Ave. 8.6' S of the S edge of the curb line \*(BoC) of W 2<sup>nd</sup> St. and 16.0' W of the W curb edge \*(BoC) of 7<sup>th</sup> Ave.

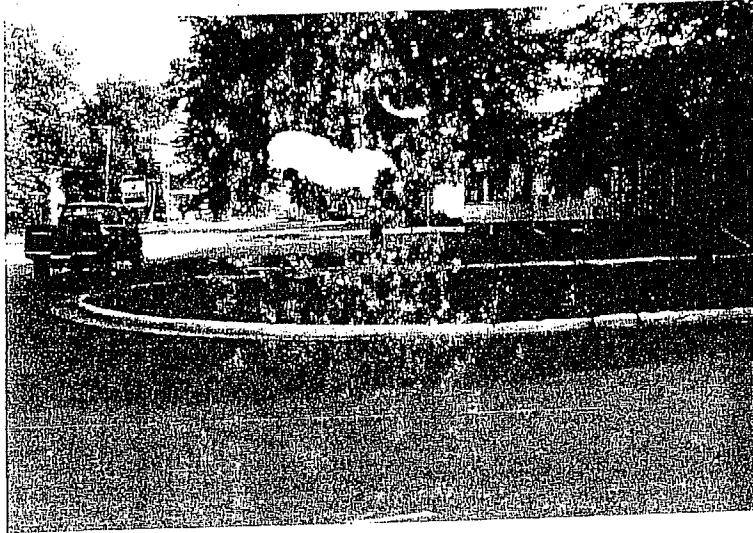
\*(BoC) = Back of Curb

Description: Monument is a brass head incased in a 6" dia. PVC pipe that is filled with concrete, and for locating it has a piece of rebar inside of it. Monument also has an aluminum flip top on it, that is approximately 1-2" below the surface.



## Monument Number 09

Survey Point	Northing	Easting	Elevation (US feet)
ROCK FALLS 09	1859987.17	2424186.27	640.73



Looking at the NE corner of 8<sup>th</sup> Ave. and 10<sup>th</sup> St.

Location: On the NE corner of 8<sup>th</sup> Ave. and W 10<sup>th</sup> St., 4' N of the N edge \*(BoC) of W 10<sup>th</sup> St. and 19.6' E of the E edge of the curb \*(BoC) on 8<sup>th</sup> Ave.

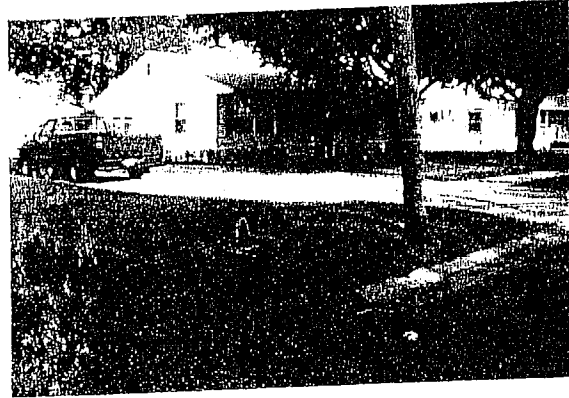
Description: Monument is a brass head incased in a 6" dia. PVC pipe that is filled with concrete, and for locating it has a piece of rebar inside of it. Monument also has an aluminum flip top on it, that is approximately 1-2" below the surface.

## Monument Number 10

Survey Point	Northing	Easting	Elevation (US feet)
ROCK FALLS 10	1855604.71	2424335.75	637.45



Looking North up Canal St.



Looking West at house 2210 Canal St.

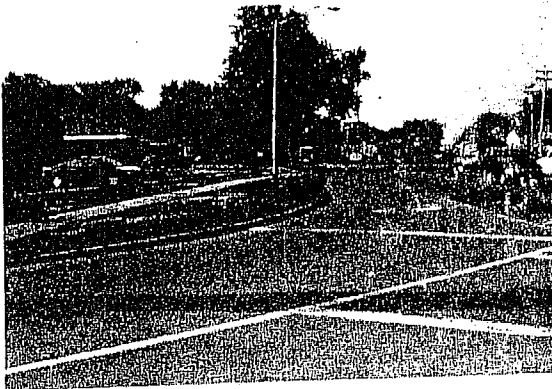
Location: On the West side of Canal St. in front of house 2210 Canal St., cross street is W 19<sup>th</sup> St. 4.9' W of the S bound curb line \*(BoC) and 28' S of the SE corner of house 2210 Canal St.

\*(BoC) = Back of Curb

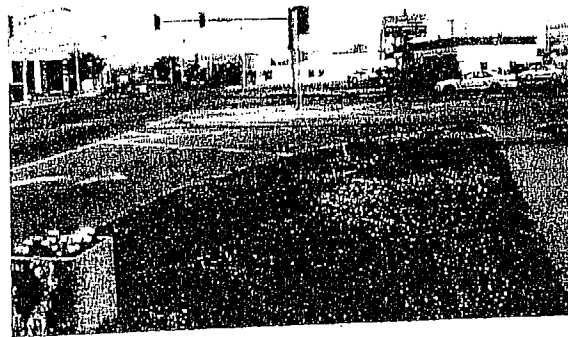
Description: Monument is a brass head incased in a 6" dia. PVC pipe that is filled with concrete, and for locating it has a piece of rebar inside of it. Monument also has an aluminum flip top on it, that is approximately 1-2" below the surface.

## Monument Number 11

Survey Point	Northing	Easting	Elevation (US feet)
ROCK FALLS 11	1862567.82	2426757.79	<del>642.74</del> 534.52



Looking South down 1<sup>st</sup> Ave.



Looking North up 1<sup>st</sup> Ave.

Location: On the SE corner of the intersection of Dixon Ave. and 1<sup>st</sup> Ave. in front of Hardee's. 5.6' East of the radial curb line and 69.3' S of the S edge of the curb of the E bound land on Dixon Ave. and 9.1' W of the W edge of the sidewalk on the E side of 1<sup>st</sup> Ave.

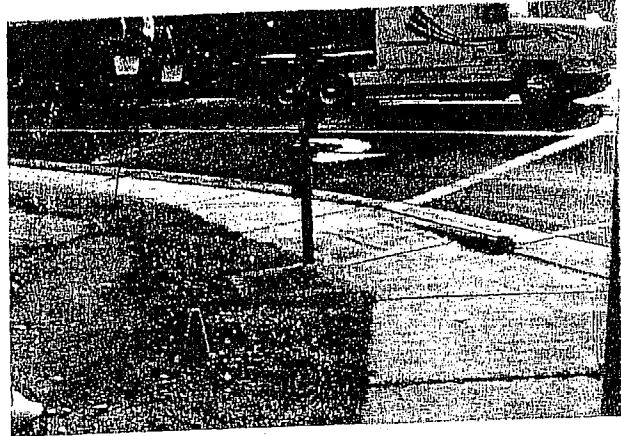
Description: Monument is a brass head incased in a 6" dia. PVC pipe that is filled with concrete, and for locating it has a piece of rebar inside of it. Monument also has an aluminum flip top on it, that is approximately 1-2" below the surface.

## Monument Number 12

Survey Point	Northing	Easting	Elevation (US feet)
ROCK FALLS 12	1860041.40	2426714.59	643.08



Looking South down 1<sup>st</sup> Ave.



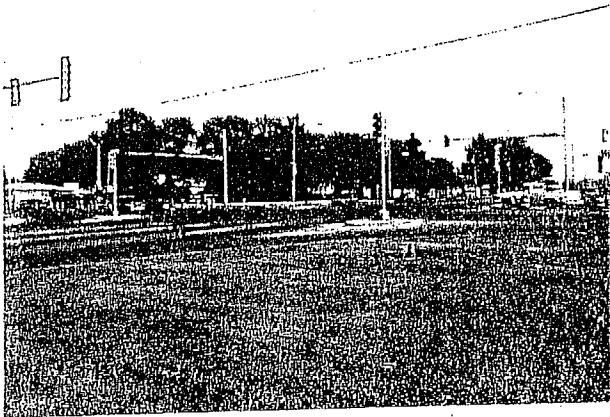
Looking East at Sterling Federal Bank

Location: On the NW corner of 10<sup>th</sup> St. and 1<sup>st</sup> Ave. in Eagle's parking lot, by their sign.  
13.5' N of the radial curb of W 10<sup>th</sup> St. and 13.8' w of the Radial curb on 1<sup>st</sup> Ave.

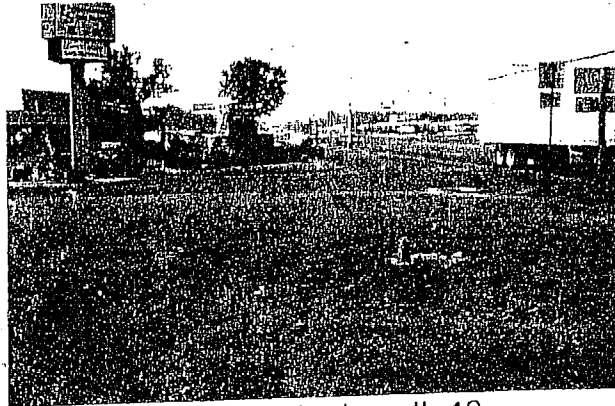
Description: Monument is a brass head incased in a 6" dia. PVC pipe that is filled with concrete, and for locating it has a piece of rebar inside of it. Monument also has an aluminum flip top on it, that is approximately 1-2" below the surface.

## Monument Number 13

Survey Point	Northing	Easting	Elevation (US feet)
ROCK FALLS 13	1857291.85	2426846.53	638.79



Looking NW at the intersection of Rt.30  
and IL 40



Looking South along IL 40

Location: On the SE corner of Rt. 30 and IL 40, in the Community State bank lot, by the fountain (Welcome to Rock Falls). 96.7' E of the NE corner of the ATM box and 21' S. to the East corner of the traffic signal hand-hole box.

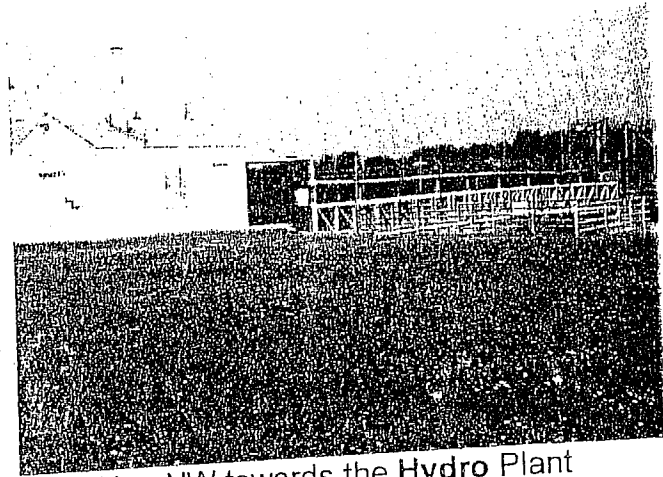
Description: Monument is a brass head incased in a 6" dia. PVC pipe that is filled with concrete, and for locating it has a piece of rebar inside of it. Monument also has an aluminum flip top on it, that is approximately 1-2" below the surface.

# Monument Number 14

Survey Point	Northing	Easting	Elevation (US feet)
ROCK FALLS 14	1865339.43	2430165.42	644.27



Looking SW toward The Lockkeeper House



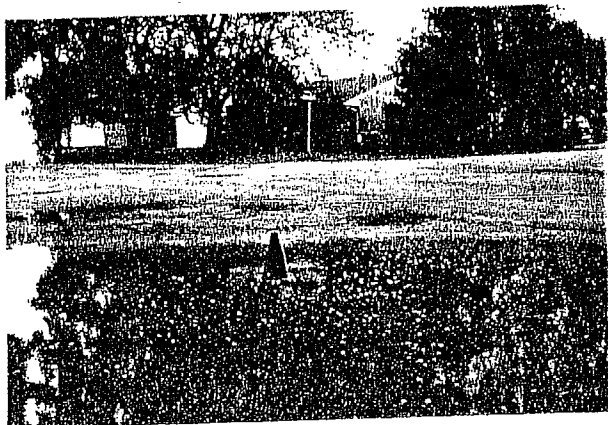
Looking NW towards the Hydro Plant

Location: 811 E 2<sup>nd</sup> Street, (Hydro Plant) in the peninsula. 41' SE from the S end of the rail around the Hydro water way and 124.2' NE of the last post of the W bound guard rail on E 2<sup>nd</sup> Street.

Description: Monument is a brass head incased in a 6" dia. PVC pipe that is filled with concrete, and for locating it has a piece of rebar inside of it. Monument also has an aluminum flip top on it, that is approximately 1-2" below the surface.

## Monument Number 15

Survey Point	Northing	Easting	Elevation
ROCK FALLS 15	1862842.39	2431340.58	650.27



Looking SE at the intersection of  
Division St. and Charles St.



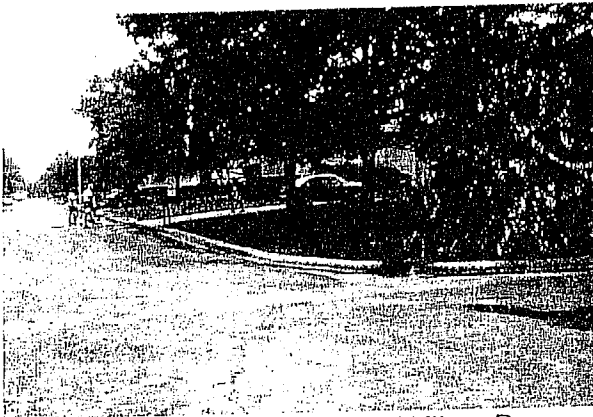
Looking NW at house 1019 Charles St.

Location: On the NW corner of the intersection of Divison St. and Charles Street. 46.4' S of the SE corner of house 1019 Charles St. and 22.6' E of the SE corner of house 1019 Charles St.

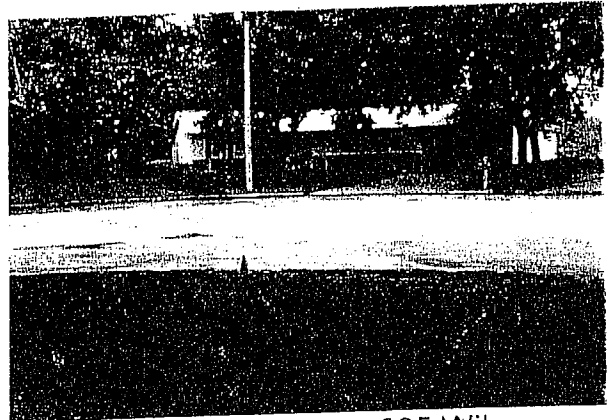
Description: Monument is a brass head incased in a 6" dia. PVC pipe that is filled with concrete, and for locating it has a piece of rebar inside of it. Monument also has an aluminum flip top on it, that is approximately 1-2" below the surface.

## Monument Number 16

Survey Point	Northing	Easting	Elevation
ROCK FALLS 16	1860202.01	2430890.00	642.67



Looking NE at house 905 Wiker Dr.  
Dr.



Looking SW from house 905 Wiker

Location: NE corner of the cul-de-sac on the south end of Wiker Dr. at house 905 Wiker Dr. 27.7' W of the corner of house 905 Wiker Dr. and 23.9' N of the manhole numbered 716 in the cul-de-sac, at the end of Wiker Dr.

Description: Monument is a brass head incased in a 6" dia. PVC pipe that is filled with concrete, and for locating it has a piece of rebar inside of it. Monument also has an aluminum flip top on it, that is approximately 1-2" below the surface.



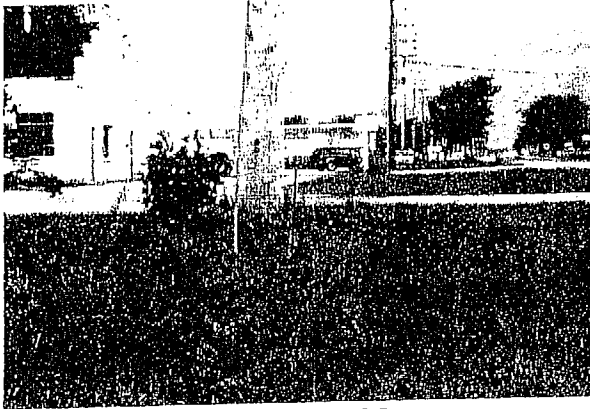
Monument Number 17

Survey Point	Northing	Easting	Elevation
ROCK FALLS 17			

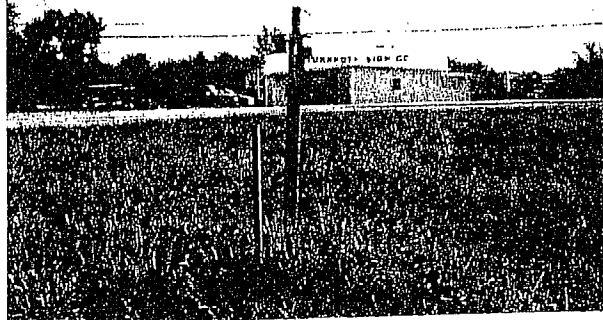
MISSING NOT AVAILABLE

## Monument Number 18

Survey Point	Northing	Easting	Elevation (US feet)
ROCK FALLS 18	1855012.84	2432224.18	640.79



Looking west along Rt. 30



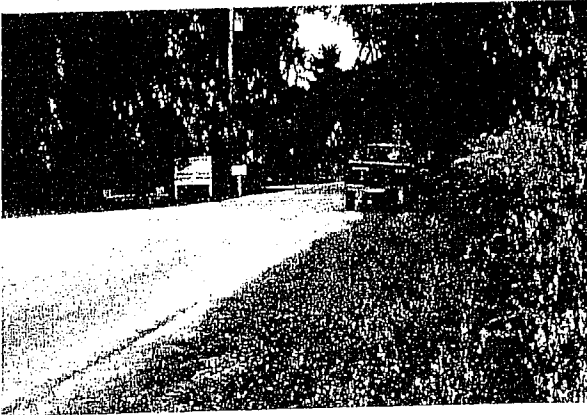
Looking north at Turnroth Sign Co.

Location: 1207 E. Rt.30, in front of Turnroth Sign Co., on the south side of Rt.30 along the Common Wealth line. Cross road is McNiel Rd. 15.3' E. of the UT pole #4838 and 41.5' S of the E bound lane pavement.

Description: Monument is a brass head incased in a 6" dia. PVC pipe that is filled with concrete, and for locating it has a piece of rebar inside of it. Monument also has an aluminum flip top on it, that is approximately 1-2" below the surface.

## Monument Number 19

Survey Point	Northing	Easting	Elevation
ROCK FALLS 19	1866018.09	2432852.03	641.82



Looking east along Shore Acres Dr.



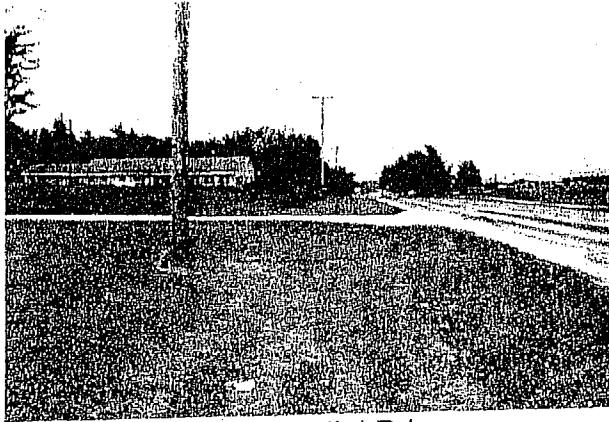
Looking west along Shore Acres Dr.

Location: In front of house 1404 Shore Acres Dr., cross road Martin Rd. 38' S of UT pole #24 (C2BA45) and 29' E of the UT pole #24 (C2BA45)

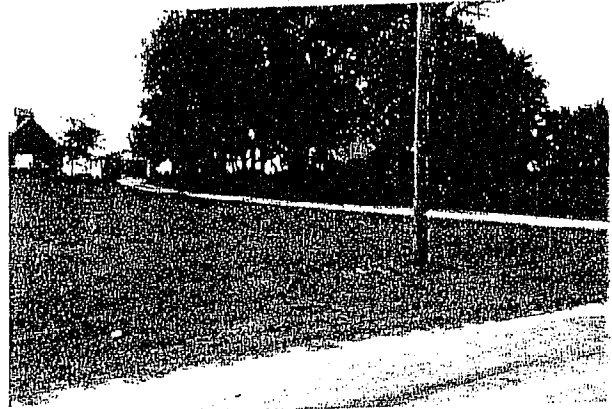
Description: Monument is a brass head incased in a 6" dia. PVC pipe that is filled with concrete, and for locating it has a piece of rebar inside of it. Monument also has an aluminum flip top on it, that is approximately 1-2" below the surface.

## Monument Number 20

Survey Point	Northing	Easting	Elevation
ROCK FALLS 20	1860085.31	2433310.40	647.43 539.19



Looking N along McNiel Rd.



Looking NW at house #### McNiel Rd.

Location: Approximately 400 Ft. South of East Coloma School on McNiel Rd. on the West side of McNiel Rd. The cross road is Dixon Ave. 5.3' S of UT pole #CPT B594 – SPP A # - 2/40, on McNiel Rd.

Description: Monument is a brass head incased in a 6" dia. PVC pipe that is filled with concrete, and for locating it has a piece of rebar inside of it. Monument also has an aluminum flip top on it, that is approximately 1-2" below the surface.

## Monument Number 21

Survey Point

ROCK FALLS 21

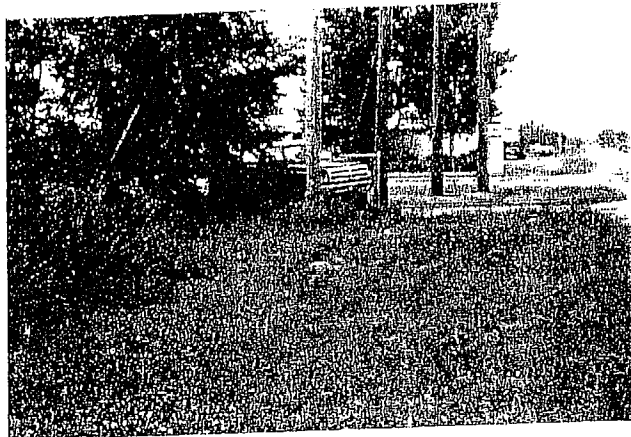
Northing

Easting

Elevation



Looking S along McNiel Rd. next to  
City Limit sign



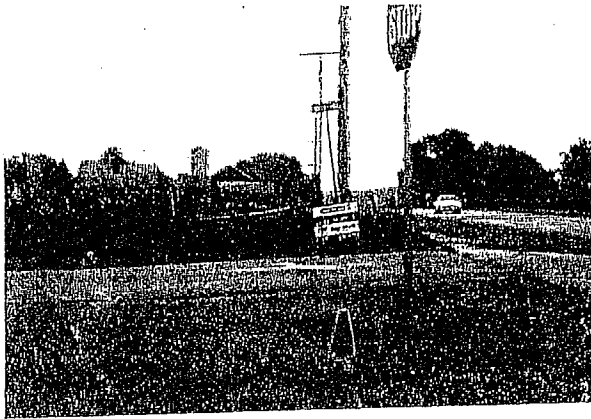
Looking NW along McNiel Rd.

Location: On McNiel Rd. and old RR crossing, by the City Limit sign on W side of the Road. South of Hill Fastener Corporation. 2.4' NE of the City Limit sign.

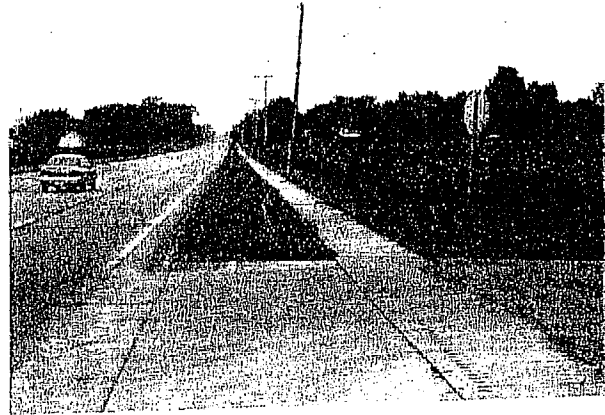
Description: Monument is a brass head incased in a 6" dia. PVC pipe that is filled with concrete, and for locating it has a piece of rebar inside of it. Monument also has an aluminum flip top on it, that is approximately 1-2" below the surface.

## Monument Number 22

Survey Point	Northing	Easting	Elevation
ROCK FALLS 22	1859990.42	2436576.81	643.60



Looking East along Rock Island Rd.  
(Dixon Ave.)



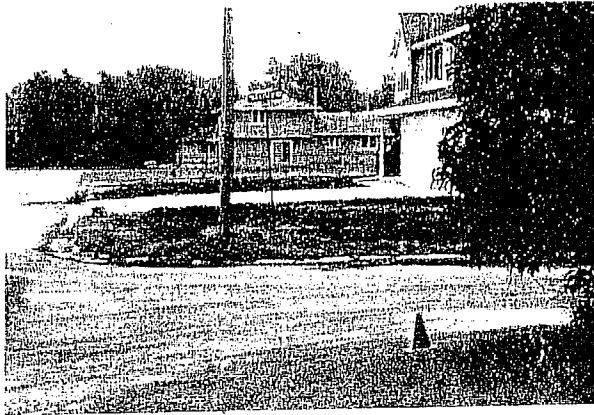
Looking West along Rock Island Rd.  
(Dixon Ave.)

Location: The NW corner of the intersection of Hill Dr. and Rock Island Rd.  
18.3' N of the west bound curb line (BoC) and 57.7' W of the UT  
pole #C3A73.

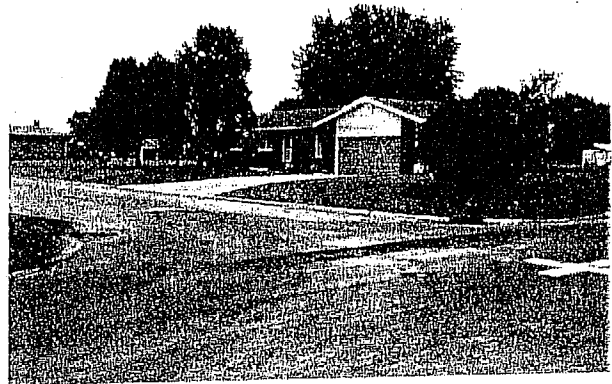
Description: Monument is a brass head incased in a 6" dia. PVC pipe that is filled with concrete, and for locating it has a piece of rebar inside of it. Monument also has an aluminum flip top on it, that is approximately 1-2" below the surface.

## Monument Number 23

Survey Point	Northing	Easting	Elevation
ROCK FALLS 23	1860047.55	2438498.85	643.99



Looking east at intersection Parkview Dr. and Middle Dr.



Looking SW at house 1002 Parkview Dr.

Location: On the SW corner of the intersection of Parkview Dr. and Middle Dr. 39.3' S of the N curb line (BoC) on Middle Dr. and 6.7' W of the S bound Curb line (BoC) on Parkview Dr. All in the NE corner of house 1002 parkview Dr. property

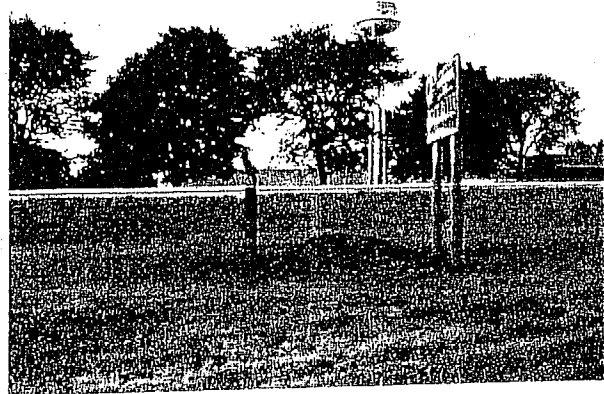
Description: Monument is a brass head incased in a 6" dia. PVC pipe that is filled with concrete, and for locating it has a piece of rebar inside of it. Monument also has an aluminum flip top on it, that is approximately 1-2" below the surface.

## Monument Number 24

Survey Point	Northing	Easting	Elevation
ROCK FALLS 24	1854846.78	2437217.10	642.12



Looking NW at AmeriGas



Looking South at Rt. 30

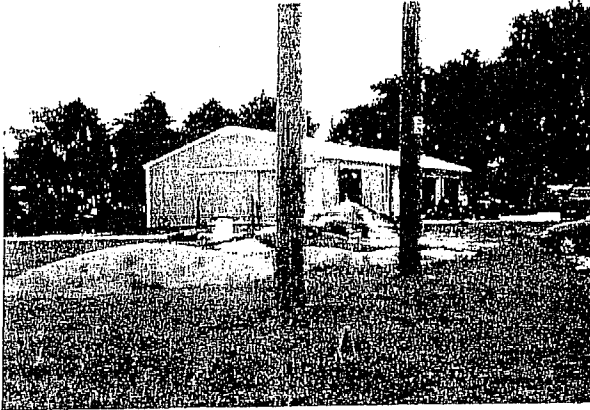
Location: On the north side of Rt.30, by the Rock Falls Welcome Sign next to Amerigas. Cross road is Spruce Street. 34' N of the W bound lane pavement and 48.2' w of UT pole #247 – 35 – 4B1

Description: Monument is a brass head incased in a 6" dia. PVC pipe that is filled with concrete, and for locating it has a piece of rebar inside of it. Monument also has an aluminum flip top on it, that is approximately 1-2" below the surface.

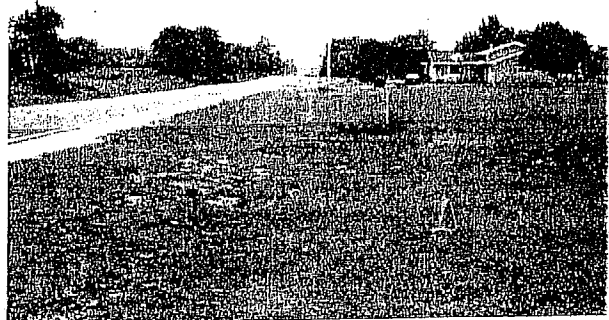


## Monument Number 25

Survey Point	Northing	Easting	Elevation
ROCK FALLS 25	1857519.76	2441218.95	643.79



Looking NW toward the golf shed on Melvin Rd.



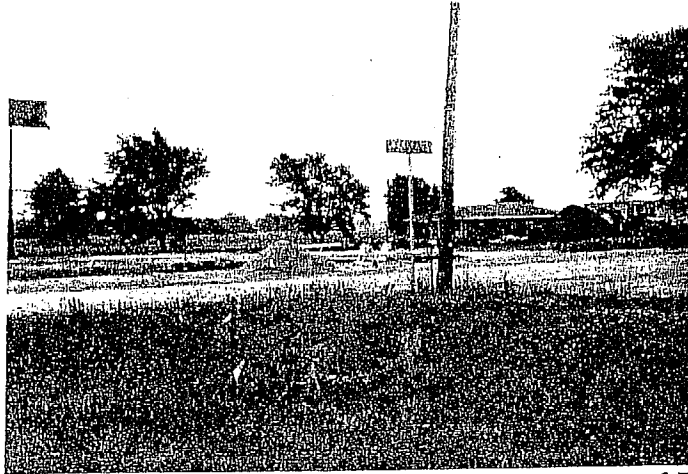
Looking South along Melvin Rd.

Location: Melvin Rd. at the High line, approximately 150' south of the Rock River Country Club maintenance shed driveway. 23.2' W of the S bound lane edge of pavement and 21.2' S of UT pole # 57 CBA

Description: Monument is a brass head incased in a 6" dia. PVC pipe that is filled with concrete, and for locating it has a piece of rebar inside of it. Monument also has an aluminum flip top on it, that is approximately 1-2" below the surface.

## Monument Number 26

Survey Point	Northing	Easting	Elevation
ROCK FALLS 26	1854874.99	2441416.45	670.67



Looking SW, Monument is in the NW corner of intersection of Rt.30 and County Line Rd.

Location: County Line Rd. and Rt.30 on the SW corner near the ROW marker. There is a state monument 2' west of this City monument .

Description: Monument is a brass head incased in a 6" dia. PVC pipe that is filled with concrete, and for locating it has a piece of rebar inside of it. Monument also has an aluminum flip top on it, that is approximately 1-2" below the surface.